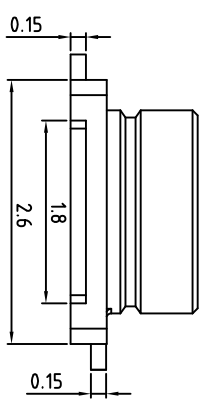
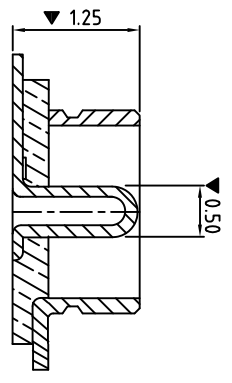
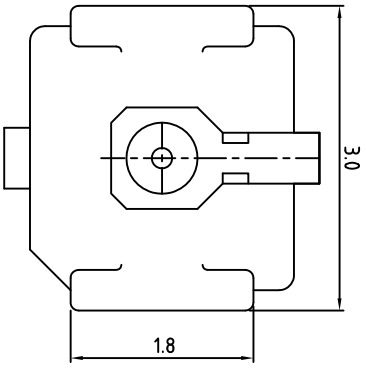
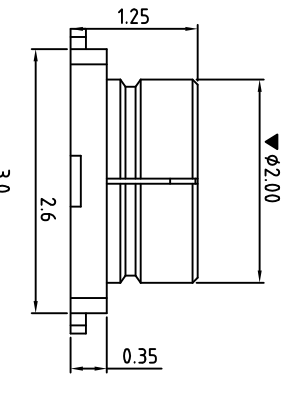
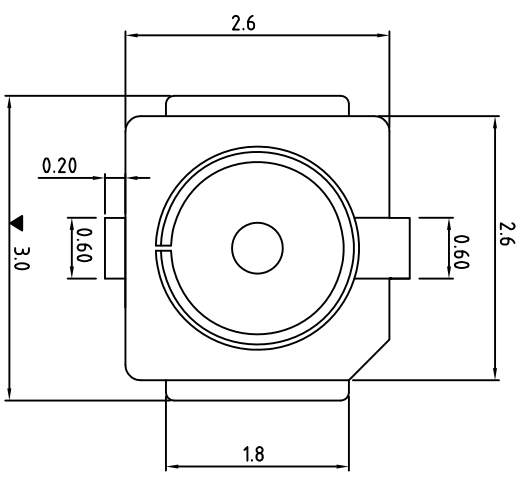
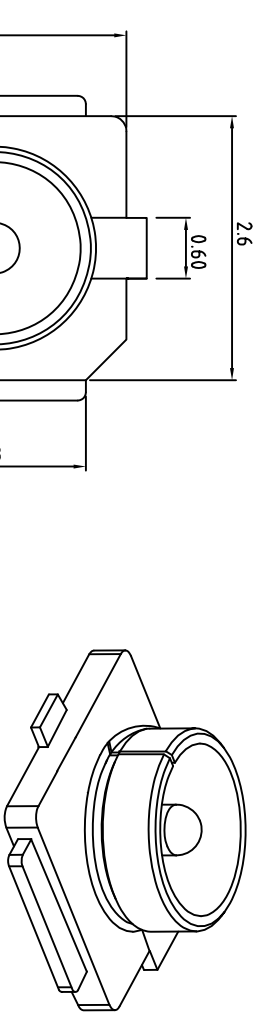
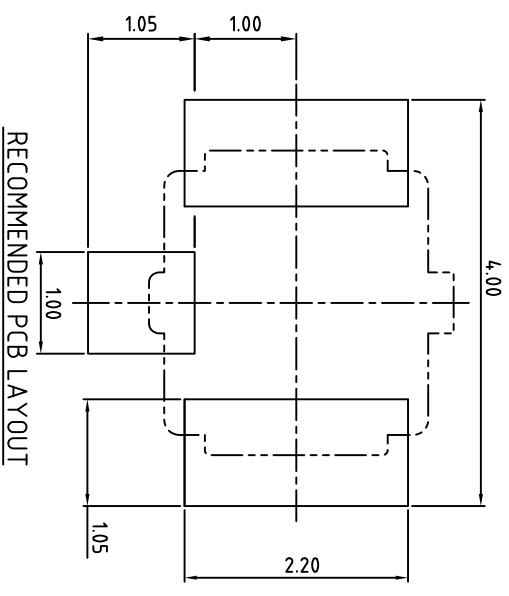


REV.	ECN NO.	LOCATIONS	DESCRIPTION	DATE	CHANGER



- NOTE: UNLESS OTHERWISE SPECIFIED
1. DIMENSION SHALL BE INTERPRETED PER ANSI Y14.5M-1994.
  2. DIMENSION MARKED WITH "▼" SHOULD SPECIFIED ON INSPECTION PLAN.
  3. CONTACT RETENTION FORCE: 0.4 N MIN.
  4. CONTACT MATERIAL: COPPER ALLOY.
  5. INSULATOR: HIGH TEMPERATURE PLASTIC UL94 V-0.
  6. CONTACT FINISH: GOLD FLASH 1-3u" ON MATING AREA & PAD.
  7. ALL MATERIAL MEET ROHS SPECIFICATION AND IN CONFORMITY WITH REACH & SVHC STANDARD STIPULATIONS.



ITEM	PART NUMBER	DESCRIPTION	Q'TY
3	RF-101-004	METAL SHELL, GOLD/BRIGHT GOLD FLASH	1
2	RF-101-003	CENTER CNT, GOLD/BRIGHT GOLD FLASH	1
1	LCP-6130W	INSULATION, LCP+30%GF, IVORY, UL94V-0	1

ROHS

GENERAL TOLERANCE		TITLE: RF HEADER (U-FL)
X± 0.30	X*± 1°	
X± 0.15	X*±	
XX± 0.10	XX*±	
XXX±	XXX*±	

CUSTOMER DRAWING		Part No. TRF-101-002		DWG NO. 20140512	
APPROVED	CHECKED:	DRAWN:	DATE:	SCALE:	SHEET: 1 / 1
Kevin	Paul	frank	m	1:1	B

鉅創科技有限公司  
TRONTEK TECHNOLOGY CO., LTD.