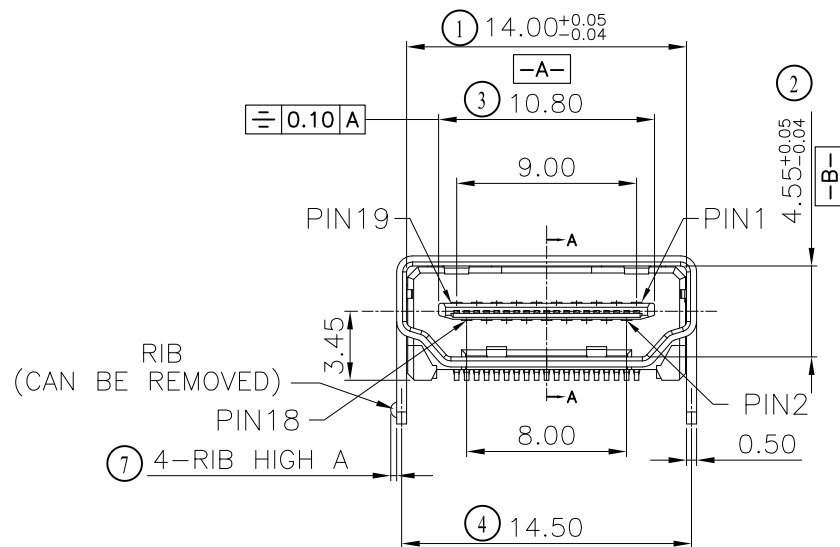


SECTION A-A
SCALE 1:1



CLASSIFICATION DIMENSION: FAI: ☉To ☉ ■ MARK IS MAJOR DIM * MARK IS CRITICAL DIM(Cpk&Cp)		鉞創科技有限公司 <i>TRONTEK TECHNOLOGY CO.,LTD.</i>	
Tolerance Unspecified Size: A4		Product Name: HDMI A/F SMT TYPE (HSA)	
0.0 ±0.10 0° ±3° 0.00 ±0.05 0°:0 ±2° 0.000 ±0.02 0°:00 ±1°	Unit: MM Scale: 1:1	Product No: HHF-14A090-2SA	
Project View	Page: 1 OF 1 Rev: 1.0	Drawing No:	Date: 2020/7/9
		Designer:	Checked: Approved:

NOTES:

- MATERIAL:
 - HOUSING: LCP, BLACK, UL94V-0
 - SHELL: BRASS
 - TERMINAL: BRASS
 - MYLAR:
- PLATING:
 - SHELL: GOLD PLATING OVER NICKEL
UNDERPLATED/NICKEL PLATING OVER ALL
 - TERMINAL: GOLD PLATING ON CONTACT AREA AND
TIN PLATING ON SOLDER AREA,
NICKEL UNDERPLATING OVER ALL
- All RAW MATERIAL, COMPONENTS, AND PROCESS MUST
MEET HAZARD SUSTAIN FREE PER RoHS & REACH STANDARD.
- P/N: HHF-1 X X X X X- X S A

SHELL MATERIAL & PLATING CODE:

- MATERIAL: COPPER ALLOY
NICKEL PLATING WITH FLANGE
- MATERIAL: COPPER ALLOY
NICKEL PLATING WITHOUT FLANGE
- MATERIAL: S50C
NICKEL PLATING WITH FLANGE
- MATERIAL: S50C
NICKEL PLATING WITHOUT FLANGE
- MATERIAL: COPPER ALLOY
GOLD PLATING WITH FLANGE
- MATERIAL: COPPER ALLOY
GOLD PLATING WITHOUT FLANG

TERMINAL PLATING CODE:

- CONTACT AREA: GOLD FLASH
SOLDER AREA: GOLD FLASH
- CONTACT AREA: 3u" GOLD
SOLDER AREA: GOLD FLASH
- CONTACT AREA: 15u" GOLD
SOLDER AREA: GOLD FLASH
- CONTACT AREA: 30u" GOLD
SOLDER AREA: GOLD FLASH
- CONTACT AREA: GOLD FLASH
SOLDER AREA: MATTE TIN 100u"
- CONTACT AREA: 3u" GOLD
SOLDER AREA: MATTE TIN 100u"
- CONTACT AREA: 15u" GOLD
SOLDER AREA: MATTE TIN 100u"
- CONTACT AREA: 30u" GOLD
SOLDER AREA: MATTE TIN 100u"

- REV. CODE
- PACKING CODE
- Tray
 - Tape & Reel
 - Tube
- FLANGE & RIB HIGH:

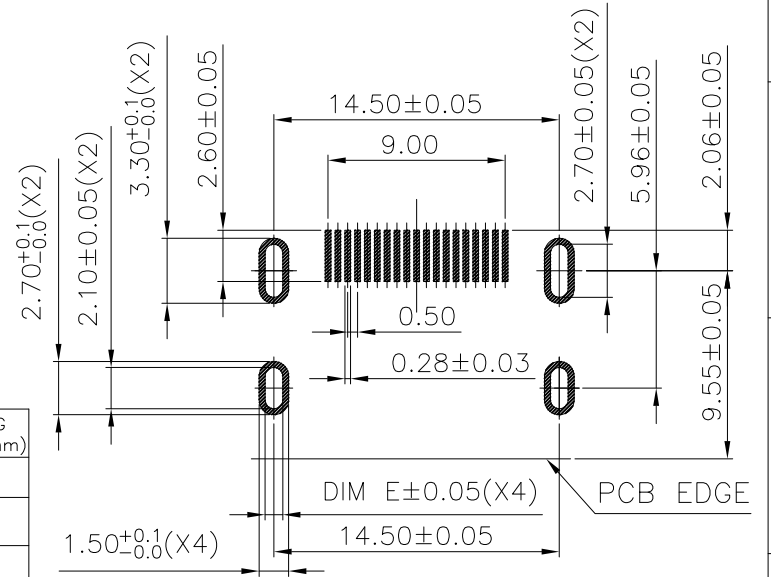
RIB	HOUSING	LONG HOUSING (DIM F=9.75mm)	SHORT HOUSING (DIM F=7.20mm)	CVT HOUSING (DIM F=8.55mm)
Without RIB		0	3	6
With RIB (RIB HIGH=0.15mm)		1	4	7
With RIB (RIB HIGH=0.30mm)		2	5	8

SHELL LEG&FLANGE HIGH CODE:

ITEM	DIM A	DIM B	DIM C	DIM D
0	1.80	2.20	0.00	1.00
1	2.20	2.20	7.20	1.20
2	2.20	2.20	5.10	1.20
3	2.20	2.20	0.00	1.00
4	2.20	2.20	7.20	1.00
5	2.20	2.20	5.10	1.00
6	1.80	2.20	0.00	1.20
7	1.80	2.20	7.20	1.00
8	1.00	1.00	0.00	1.00
9	2.20	2.20	0.00	1.20

COVER & MYLAR:

MYLAR COVER	W/ MYLAR	W/O MYLAR
Without COVER	1	0
With COVER	4	3



RECOMMENDED PCB LAYOUT
(THICKNESS=1.6±0.15mm)

RIB HIGH A		0.15	0.30
DIM.E		0.90	1.10

CLASSIFICATION DIMENSION: FAI : @To@ ■ "MARK IS MAJOR DIM * "MARK IS CRITICAL DIM(Cpk&Cp)	鉸創科技有限公司 TRONTEK TECHNOLOGY CO., LTD.		
Tolerance Unspecified Size: A4 Unit: MM Scale: 1 : 1 Project View Rev: 1.0	Product Name: HDMI A/F SMT TYPE (HSA)		
0.0 ±0.10 0° ±3° 0.00 ±0.05 0° 0 ±2° 0.000 ±0.02 0°:00 ±1°	Product No: HHF-14A090-2SA		
	Drawing No: _____		Date: 2020/7/9
	Designer: _____	Checked: _____	Approved: _____