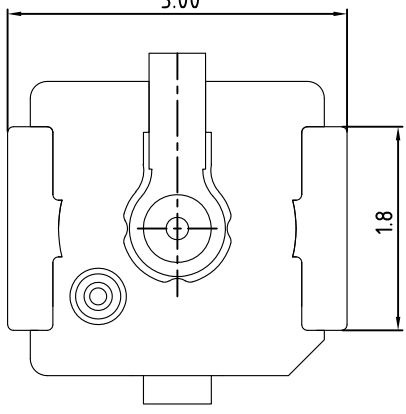
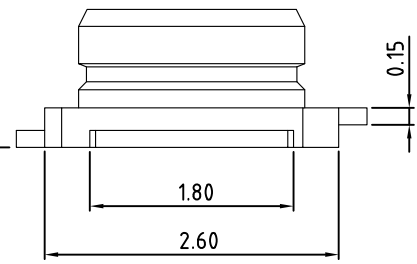
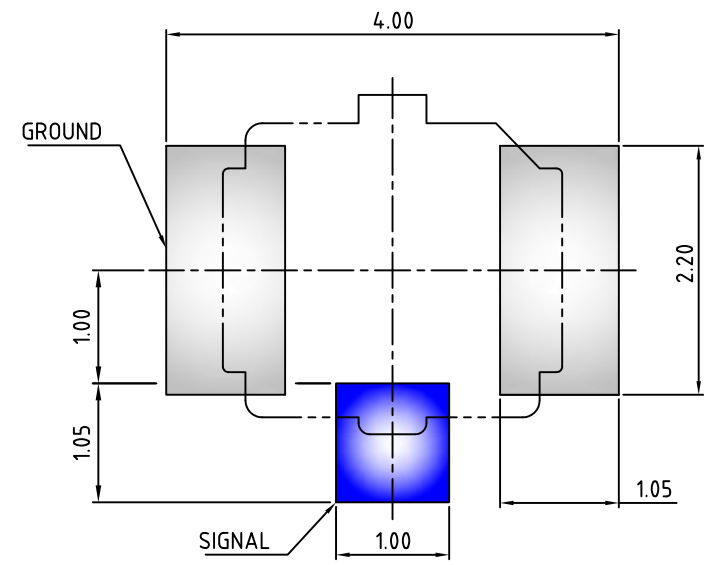


-X- [Symbol] 0.08 Max.



NOTE: UNLESS OTHERWISE SPECIFIED

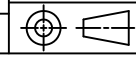
1. DIMENSION SHALL BE INTERPRETED PER ANSI Y14.5M-1994.
2. DIMENSION MARKED WITH "▼" SHOULD SPECIFIED ON INSPECTION PLAN.
3. CONTACT RETENTION FORCE: 0.3 N MIN.
4. CONTACT MATERIAL: COPPER ALLOY.
5. INSULATOR: HIGH TEMPERATURE PLASTIC UL94 V-0.
6. CONTACT FINISH: GOLD 1-3u" ON MATING AREA, GOLD FLASH ON SOLDER TAILS ALL OVER 50u" NICKEL Min UNDER PLATED.
7. SHELL FINISH: GOLD FLASH ON SOLDER TAILS, ALL OVER 50u" NICKEL Min UNDER PLATED.
8. RATED VOLTAGE: AC 60VRMS.
9. NORMAL CHARACTERISTIC IMPEDANCE: 50 OHMS.
10. FREQUENCY: DC ~ 7.5GHz.
11. VSWR: PLUG 1.3 MAX, AT 0-3GHz --> 1.5 MAX, AT 3-6 GHz. RECEPTACLE 1.3 MAX, AT 0-3GHz, 1.4 MAX, AT 3-6 GHz, 1.5 MAX, AT 6-7.5 GHz.

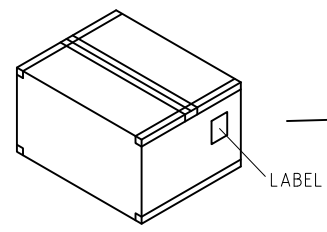
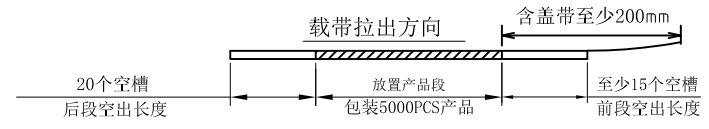
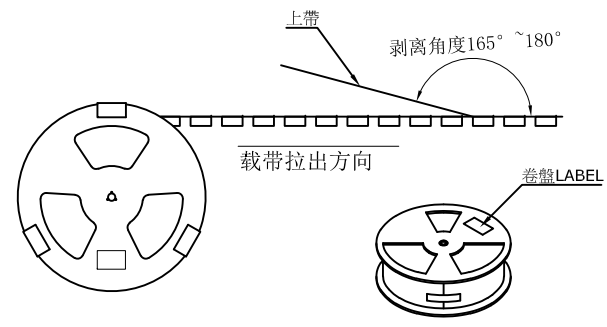
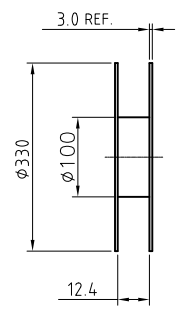
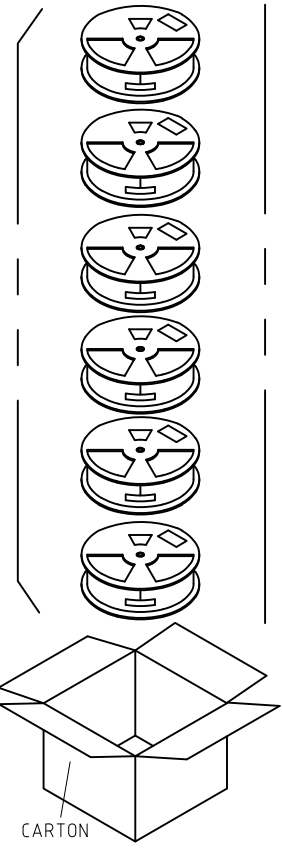
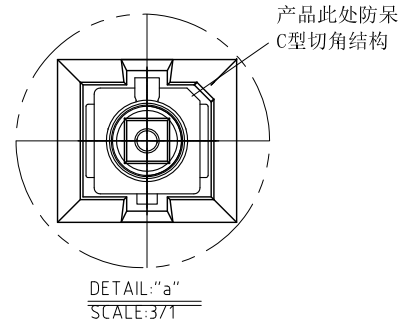
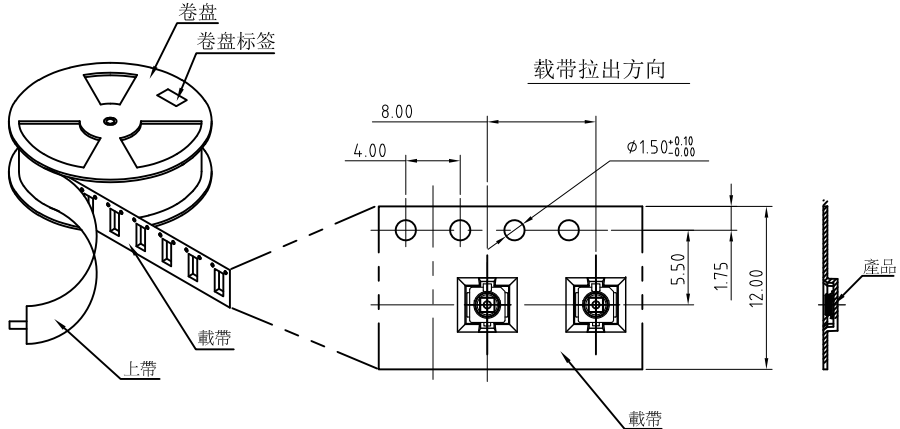


RECOMMENDED PCB LAYOUT

3	GROUND PAD	METAL SHELL, GOLD/BRIGHT GOLD PLATING	1
2	CENTER PIN	CENTER CNT, GOLD/BRIGHT GOLD PLATING 1-3u"	1
1	HOUSING	OVER MOLD HOUSING, LCP, IVORY, UL94V-0	1
ITEM	PART NUMBER	DESCRIPTION	Q'TY

		NAME (INTENDED USE) U.FL RECEPTACLE CONN H=1.25mm, Mating H=2.5mm		鉍創科技有限公司 TRONTEK TECHNOLOGY CO., LTD.	
TOLERANCES UNLESS OTHERWISE SPECIFIED		PART NO. (INTENDED USE)		TITLE U.FL RECEPTACLE	
X.	±0.30	UNITS	DRWN	WANG	DATE 25/08/01
X.X	±0.15	m/m	CHKD	WANG	DATE 25/08/01
X.XX	±0.10	SEE TABLE	APPD	WANG	DATE 25/08/01
X°	±1°	SEE TABLE			
				DWG NO. TRF101-030	
				SCALE	SHEET
				1:1	1/2
				REV.	C





INFORMATIONS OF THE PACKING.
(Q'TY/REEL): 5000PCS.

		NAME (INTENDED USE) U.FL RECEPTACLE CONN H=1.25mm, Mating H=2.5mm		鉍創科技有限公司 TRONTEK TECHNOLOGY CO.,LTD.		
TOLERANCES UNLESS OTHERWISE SPECIFIED		CUST		PART NO. (INTENDED USE)		TITLE PACKING DRAWING
X.	±0.30	UNITS	m/m	DRWN	WANG	DATE 25/08/01
X.X	±0.15	MAT'L	SEE TABLE	CHKD	WANG	DATE 25/08/01
X.XX	±0.10	FINISH	SEE TABLE	APPD	WANG	DATE 25/08/01
X°	±1°			DWG NO. TRF101-030		SCALE 1:1
						SHEET 2/2
						REV. C